

TOTAL MOBILITY

The COMMUNITAKE platform uniquely delivers on mobility imperatives of the connected organization. It manages mobile assets; monitors mobile experience; allows total support; provides high security; and facilitates vertical mobility solutions.

CAPABILITIES

MULTI-CHANNEL CARE



COMMUNITAKE provides you with an on-device application that seamlessly tests the device and performs auto repair actions to optimize use everywhere. You can perform complete control over a device from afar and activate automated resolution flows. Community members can share devices among themselves via remote control technology for collaborative support.

DEVICES & APPLICATIONS MANAGEMENT



COMMUNITAKE enables you to view and manage all of your mobile devices, device attributes, device users and the device's connectivity to your enterprise network and content. Define device settings and services over-the-air. Define mobile applications policies and BYOD programs. Perform mass deployment of applications, content and configurations. Track and monitor compliance to policies and perform automated enforcement.

SECURITY AND CONTAINERIZATION



COMMUNITAKE secures messages and SharePoint documents in a secure container. The container deployment can be enhanced to secure emails, email attachments, web applications, contacts and calendar. CommuniTake allows you unique secure email where emails are projected on the device from a server without residing on it. You can perform remote data recovery actions, set flexible password and browsing control and restrict device services.

MOBILE EXPERIENCE MONITORING



COMMUNITAKE monitors dropped calls by location and provides you with a comprehensive map toward proactive care actions. It continuously diagnoses your applications usage and notifies on possible resources faults. It leverages device counters and dynamic plans to calculate your accumulated usage and alert on exceptions.

IN-STORE CARE



COMMUNITAKE facilitates flexible management of devices and content by multiple store parameters. It enables you to manage the on-device content with periodic synchronization. You can monitor in-store experience by the use of the device and send timely, contextual messages to consumers via the in-store devices.

1

FOR SERVICE PROVIDERS: PROVEN FEATURE RICH TOTAL CARE

- ▼ Support cost reduction through multiple care tools
- ▼ Actionable insights for proactive care
- ▼ Increased stores' revenues and operational efficiencies

2

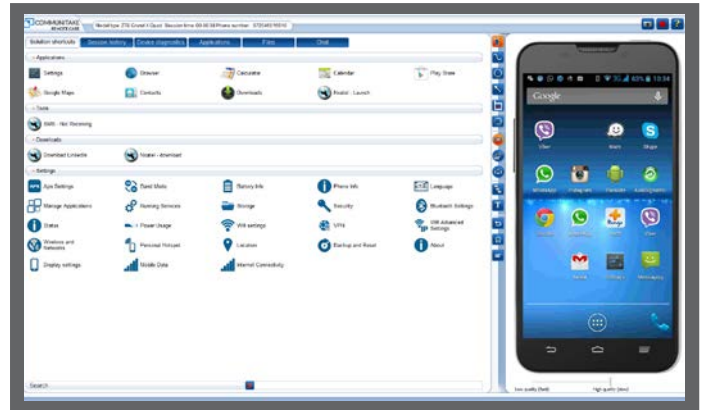
FOR BUSINESSES: SEAMLESS MOBILITY AND PRODUCTIVITY

- ▼ Smart affordable and easy to operate mobility solution
- ▼ Highly secure communication and content
- ▼ Expenses reduction via usage monitoring

3

FOR IOT COMPANIES: INCREASED DEVICES' PERFORMANCE

- ▼ Minimize devices' idle time via proactive and timely care
- ▼ Optimize device reliability via OTA software and configurations updates
- ▼ Mitigate malfunctions risk through collaborative remote guidance



TECHNOLOGY

- ▼ COMMUNITAKE supports Android (2.3+), iOS (5.0+), WP (8.1+), BB (4.3+), Windows and OSX (for PC takeover). (Note: Device management and remote support features vary by operating system).
- ▼ Multitenant and highly scalable architecture.
- ▼ Flexible delivery: cloud and on premises.

WHAT MAKES IT REMARKABLE?

Smart and easy operation
 mobility solutions fusion
Multi-channel care
Vertical mobility **Best Value**
Best in class security

COMMUNITAKE delivers a comprehensive Mobility platform that unifies robust multi-channel support with highly secure device, smart Enterprise Mobility Management, and core Android Internet of Things. The CommuniTake solutions suite (1) turns support to be the hallmark of a successful service provider; (2) manages mobile resources, processes and security to effectively operate business mobility; (3) enables complete wiretapping protection for mobile devices; (4) and facilitates seamless performance for connected Android machines. CommuniTake proven success features superior technology; advanced functionality; flexible delivery methods; and white label models. CommuniTake products are deployed by foremost operators and businesses worldwide.